

# Keola La'i 2026 Hurricane Protocols & Resident Preparedness Guide

Keola La'i Management Team – Honolulu, Hawaii

**Hurricane Season: June 1 – November 30**

*"Preparedness is key. Get your supplies early."*

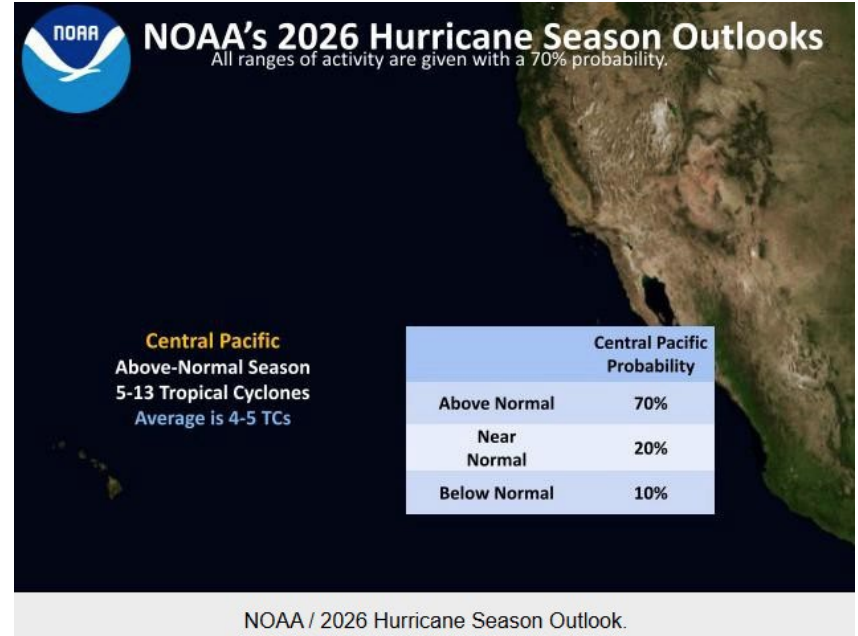
# 2026 Season Outlook

## 2026 FORECAST: 1-4 TROPICAL CYCLONES

The National Oceanic and Atmospheric Administration (NOAA) projects a **above-normal average hurricane season with 5-13 tropical cyclones** for the Central Pacific. However, even a single storm can be catastrophic.

## KEY FORECASTING TOOLS

- **Consensus Model** (Cone of Uncertainty) – most reliable path predictor
- **European Model (ECMWF)** – high-accuracy global weather model
- **American Model (GFS)** – widely used U.S. forecast model



# What to Expect Before, During, and After a Hurricane or Tropical Storm

## BEFORE

Keola Lai staff will take several steps during the days prior to a hurricane to promote safety and minimize property loss or damage in case the forecasted storm hits Honolulu.

We rely on getting information from the Central Pacific Hurricane Center (CPHC) in Honolulu. The CPHC is a specialized branch of the federal government's NOAA network. This means our local forecasters have direct access to the exact same advanced supercomputers and global weather models used to track major hurricanes worldwide.

There are different models and they aim to predict the **intensity** (wind speed and storm structure) and its path. The most reliable models are the CPHC Cone of Uncertainty (**the Consensus Model**), also the European model (**ECMWF**) and the American model (**GFS**).

### Where the forecast struggle:

- 1- **The "Rapid Intensification"**: The hardest thing for models to predict is rapid intensification – when a storm explodes from a Category 1 to a Category 4 or 5 in just 24 hours. The science is getting better, but models still frequently miss the exact timing and severity of these explosive events.
- 2- **The "Unique Environment"**: Hawaii is surrounded by a complex neighborhood of cooler waters and highly variable wind shear. It is incredibly difficult for models to guess exactly how a storm's internal engine will react to those obstacles, whether it will maintain its Category 3 strength, or if it will suddenly fall apart into a messy, weaker tropical storm just before it reaches the land.

**Given the unpredictable nature of hurricanes, we will operate out of an abundance of caution and take precautions as if a major storm will directly impact Oahu and our property.** During this time, our team will be working extra hard to protect the parts of the building where the risks are greatest. To help us secure the property efficiently, we kindly ask residents to be mindful of these critical efforts and hold off on any non-essential requests so our staff can remain fully focused on storm preparations. On the following pages, we've detailed some possible preparatory actions and a notional timeline for completing them as a reference, but actual actions and times may vary depending on circumstances.

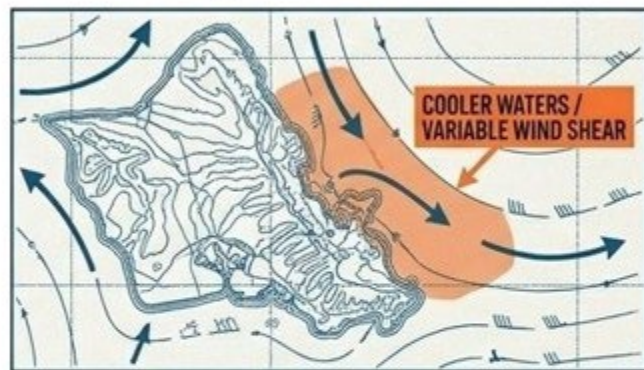
# FORECASTING BLIND SPOTS

## RAPID INTENSIFICATION



- Models (Consensus, ECMWF, GFS) frequently miss the exact timing when a storm explodes from Category 1 to Category 5 in just 24 hours.

## THE UNIQUE ENVIRONMENT



- ✓ Cooler waters and variable wind shear make it nearly impossible to predict if a storm's engine will maintain strength or suddenly fall apart before landfall.



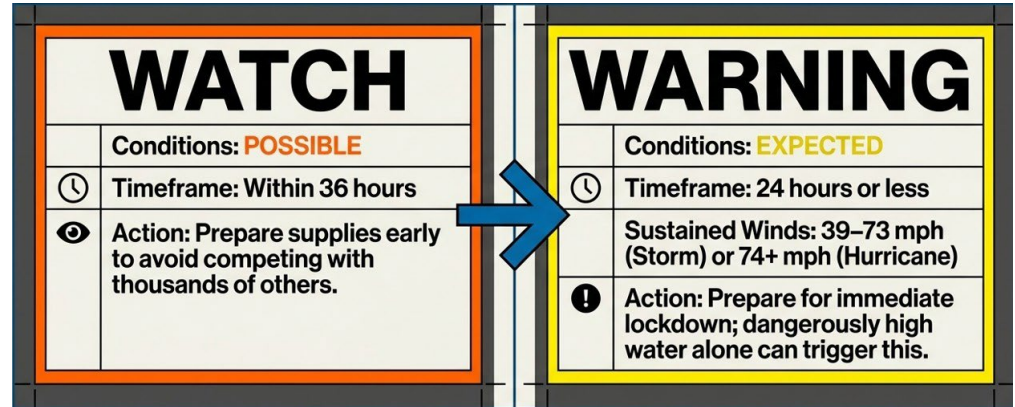
Because of these blind spots, Keola La'i management operates as if a major storm will directly impact our property.

# Watches & Warnings

THE CENTRAL PACIFIC HURRICANE SEASON RUNS JUNE 1 – NOVEMBER 30

The critical difference between possible and expected conditions.

Alert Level	Wind Speed	Timeframe
Tropical Storm Watch	Possible 39–73 mph	Within 36 hours
Tropical Storm Warning	Sustained 39–73 mph	Within 24 hours
Hurricane Watch	Possible 74+ mph	Within 36 hours
Hurricane Warning	Sustained 74+ mph	Within 24 hours



# Before the Storm: Building Preparations Timeline

Keola La'i staff will operate with maximum caution, treating every approaching storm as a direct hit on Oahu.

## 48 Hours Prior

Monitor TV and media advisory levels.

## 36–24 Hours Prior (Watch Advisory)

Cancel amenity reservations; distribute sandbags at common area doors; post preparedness reminders.

## 24–12 Hours Prior (Warning Advisory)

Close BBQ & pavilion areas; close Pool & Spa (lower water levels in the pool & spa are needed to prevent overflow).

## 12–6 Hours Prior

Post updated elevator notices on advisory levels.

## 6–3 Hours Prior

Close Fitness Center & restrooms; lock ground floor garage gates; open 3rd floor garage gates; unlock Fire Stairs B & E.

## 3–1 Hours Prior

Close main 3rd floor lobby doors; send most staff home.

## Within 1 Hour Prior

Two elevators taken offline.

## Strongly Advised:

Residents must return home before strong winds begin. Elevator malfunctions from wind pressure may occur hours before the storm arrives.

# During the Storm

## What Residents Must Do

- **Stay inside your unit.** Do not approach windows, even if locked. Seek refuge in bathrooms, hallways, or fire stairs if needed.
- **Do not panic.** Staying calm is your greatest asset during a storm.
- **Avoid non-emergency phone use.** Emergency responders have priority access to communication networks.
- **Listen to broadcast updates** for storm status and official guidance.
- **Expect all disruptions:** electricity, water, cable, and internet may all go out.
- **No staff or authority assistance** will be available during the active storm event.

*Don't assume that diminishing wind and rain means the danger is completely over – the eye of the storm may pass, bringing a temporary lull before conditions worsen again.*



### IMPORTANT: PLEASE NO CANDLES

The sprinkler and fire alarm systems may not function without electricity or water pressure. A candle fire could spread without warning. Use **flashlights or battery-powered lights only**. However, if you **MUST** use candles, make sure it is inside of a glass bottle fully covered:



# DURING AN EXTENDED BLACKOUT OUR FIRE SUPPRESSION SYSTEM WILL BE OFFLINE.



## THE REASON:

WITHOUT ELECTRICITY OR WATER PRESSURE, THE BUILDING'S SPRINKLER AND FIRE ALARM SYSTEMS MAY NOT FUNCTION. A FIRE CAUSED BY A KNOCKED-OVER CANDLE COULD SPREAD RAPIDLY WITHOUT WARNING OR AUTOMATED SUPPRESSION.

**THE RULE:**  
HOWEVER, IF YOU USE  
CANDLES, MAKE SURE IT IS  
INSIDE OF A BOTTLE FULLY  
COVERED!



## THE ALTERNATIVE:

RELY EXCLUSIVELY ON FLASHLIGHTS,  
HEADLAMPS, AND PORTABLE  
FLUORESCENT LIGHTS.



# After the Storm — Hazards Remain, Patience is Essential

The General Manager will be on-site to inspect, coordinate repairs, and issue status updates via **text, email, or other means** when feasible.

## SAFETY & HAZARDS

- **Wait for official all-clear** before leaving your unit — this may take days depending on storm severity.
- **Watch for hidden hazards:** live electrical wires, shattered glass, splintered wood, structural damage, and debris.
- **Tap water may be contaminated** — After power is restored and water is back, do not drink or cook with it until officials confirm safety.
- **Toilets may not flush** if water pressure is insufficient. Fill bathtubs in advance for flushing water.
- **Trash collection** may be suspended for several days due to blocked roads or facility closures. **CRITICAL:** If trash pickup is delayed, the trash chutes and trash rooms on all floors will be locked immediately. Do NOT leave trash bags on the floor of the trash room, in the hallways, or in the stairwells. This creates an immediate fire hazard, blocks emergency exit paths, and attracts pests.

### How to Manage Trash Inside Your Unit:

- **Separate Your Waste:** Keep wet food waste separate from dry trash (plastics, paper, boxes).
- **Double-Bag Wet Waste:** Place all food scraps and organic waste into small bags, squeeze out the air, tie them tightly, and double-bag them to contain odors.
- **Minimize Food Waste:** During a power outage, try to consume non-perishable foods that generate less wet waste.
- **Store in a Cool Area:** Keep your bagged trash in a designated area of your unit—such as a lanai (if safe and secured from wind) or a utility closet—away from main living spaces.

## UTILITIES & BUILDING OPERATIONS

- **Power outages** may last days to weeks. HECO restoration timelines are unpredictable island-wide.
- Keola La'i's **diesel generator** provides emergency lighting and one freight elevator for approximately **8 hours only**. Please be aware that refueling could take weeks, as local diesel distributors will prioritize supplying critical government and emergency agencies first.
- Water, air conditioning, and other utilities will also be interrupted.

# THE SEVERE LIMITATIONS OF OUR EMERGENCY DIESEL GENERATOR.



## THE 8-HOUR LIMIT:

KEOLA LA'I'S DIESEL GENERATOR IS DESIGNED TO POWER EMERGENCY LIGHTS AND EXACTLY ONE ELEVATOR (FREIGHT) FOR APPROXIMATELY 8 HOURS.

## THE RESUPPLY REALITY:

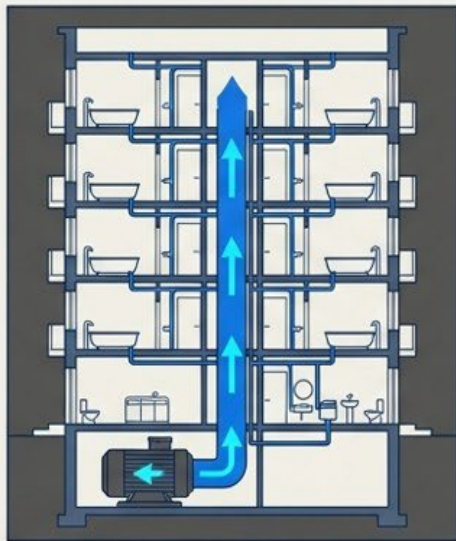
THE GENERATOR STOPS WHEN THE DIESEL RUNS OUT. THE FEW COMPANIES DELIVERING DIESEL ON OAHU WILL BE OVERWHELMED. KEOLA LA'I IS NOT A PRIORITY FOR RESUPPLY.

## THE EXPECTATION:

NORMAL OPERATIONS, AC, AND WATER MIGHT NOT BE RESTORED FOR DAYS OR WEEKS DEPENDING ON HECO AND THE BOARD OF WATER SUPPLY.

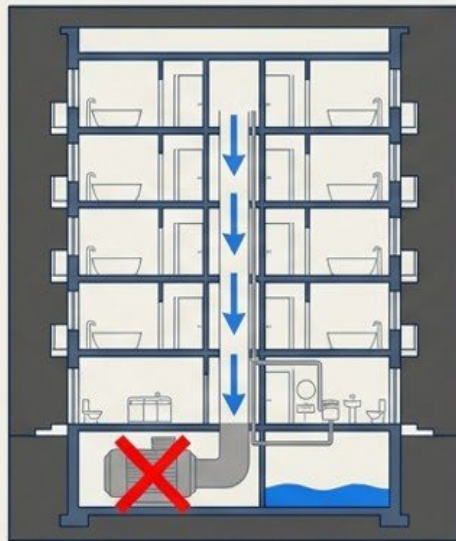
# Gravity dictates our water pressure during a blackout.

## The Water Pressure Paradox



**Active State: Electric Pump ON**

**The Mechanism:** Water is electrically pumped UP the high-rise. If electricity fails, pumps fail. Pressure drops instantly. Toilets will not flush and taps run dry.



**Power-Off State: Pump Fails**



**The Solution:**

Fill your bathtub before the storm for manual toilet flushing and basic sanitation.

**The Rule:**

**Do NOT let water go over the overflow valve.**

# REMAIN SHELTERED. DO NOT EXPECT IMMEDIATE ASSISTANCE.



## DURING THE STORM

- Stay inside and away from windows.
- If needed, seek refuge in the bathrooms, hallways, or fire stairs.
- The eye of the storm bring a false lull, do not go outside.
- Emergency responders most likely will NOT be available.



## THE AFTERMATH

- Wait inside until authorities declare is safe.
- Watch for live wires, shattered glass, and structural damage.
- Watch for slippery condition and all sorts of hazards.



## STAFFING REALITIES

Management will protect property, but building operations will be strictly limited until employees are allowed by authorities to safely return. Be very patient!

# Ingress and Egress from the Building During an Extended Outage



## STAIRWELL B

**It is the only way to access your unit!**

Location

Access Notes

Makai side / right of elevators

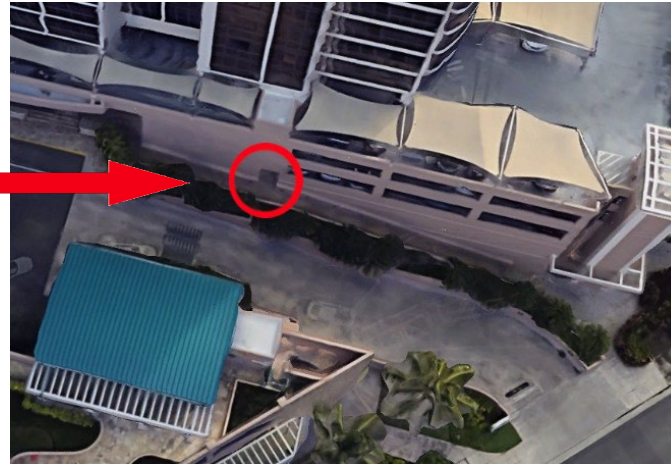
Exits on Level 2: at the stairs parallel to Queen St. ramp

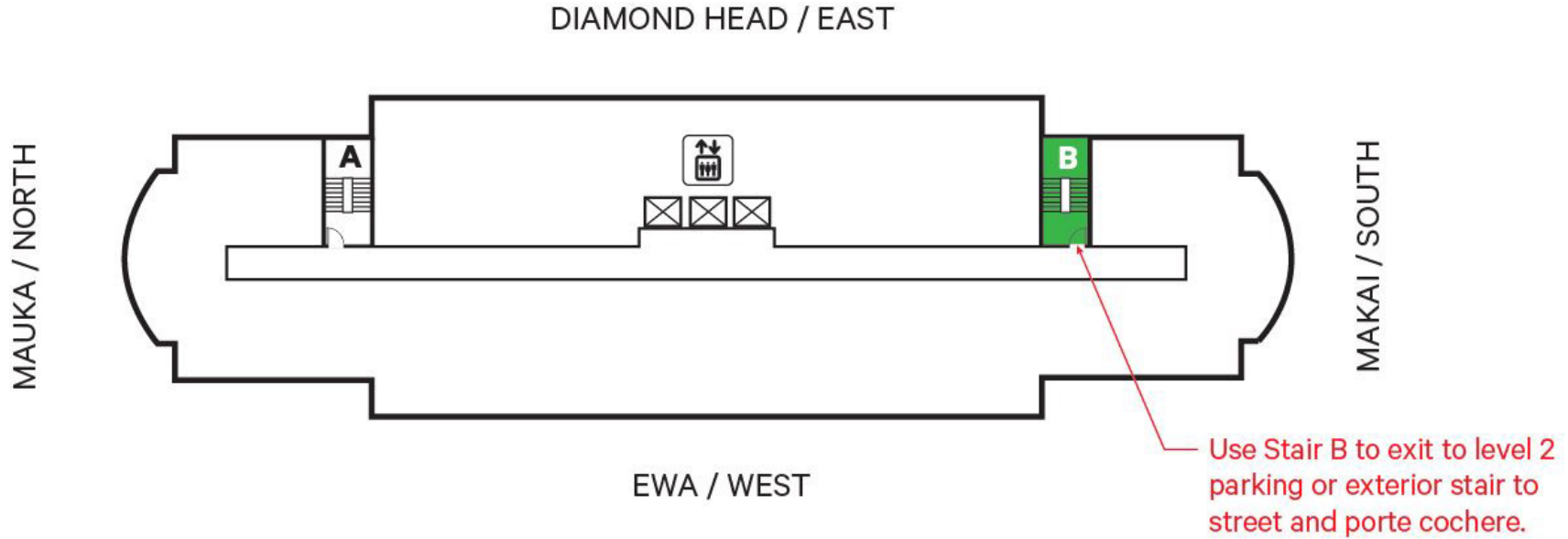
*Stairwell B is accessed through the walkway door parallel to the garage ramp, just below the 3rd floor lobby. This door will be unlocked during an extended power outage.*

## GARAGE ACCESS DURING OUTAGE

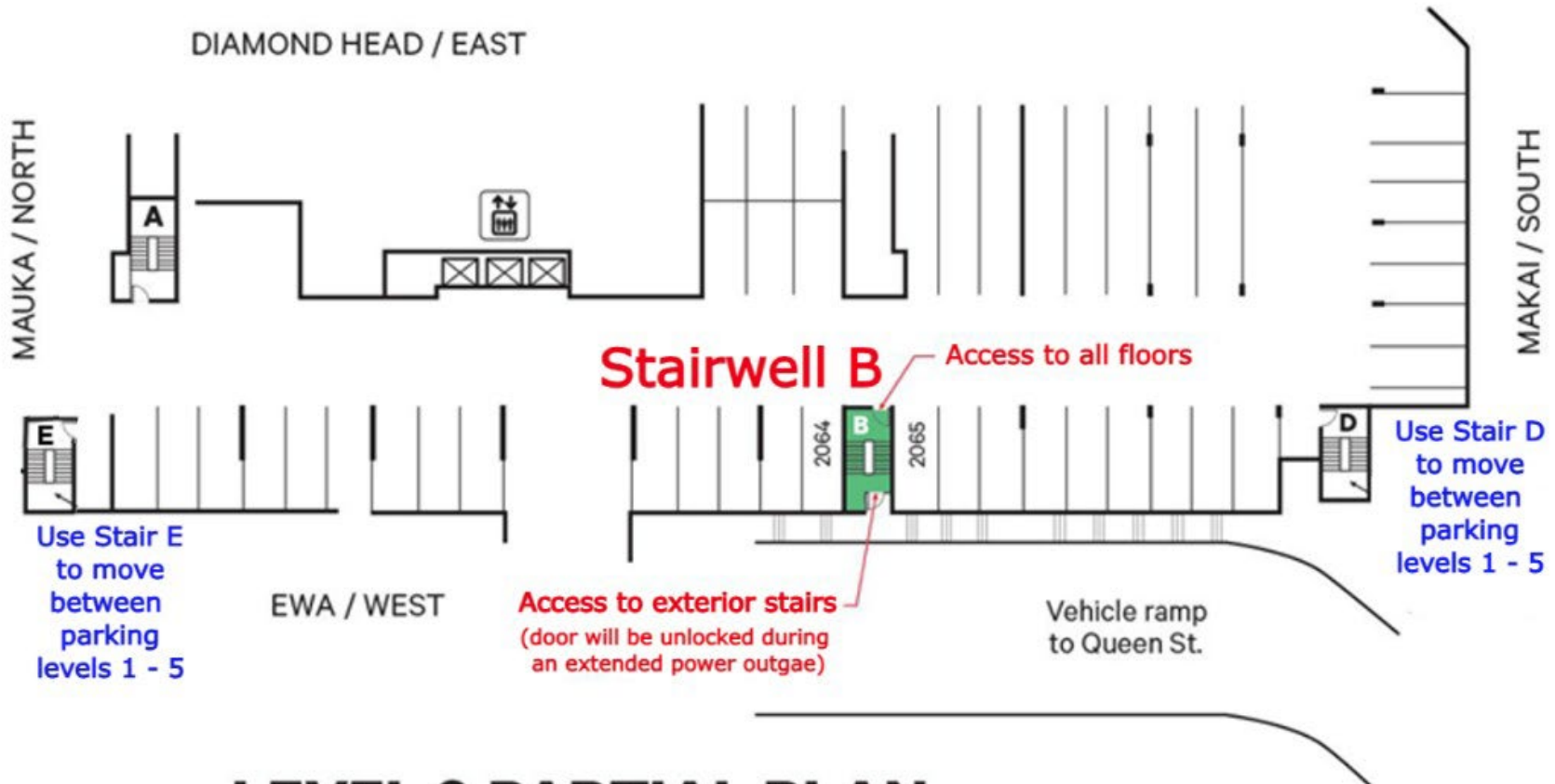
- Key fob readers will **not** work without power.
- All garage access via **3rd floor garage gate only** — drive up or down via ramps to your stall.
- All 1st floor garage gates will be **locked** for security.

**IF YOU PARK IN THE 1<sup>ST</sup>; 3<sup>RD</sup>; 4<sup>TH</sup> and 5<sup>TH</sup> PARKING GARAGE FLOORS,  
YOU MUST USE THE 2<sup>ND</sup> FLOOR GARAGE TO STAIRWELL B,  
FROM THERE USE STAIRS D (Makai) & E (Mauka)**





# TYPICAL RESIDENTIAL FLOOR PLAN



# LEVEL 2 PARTIAL PLAN

# Build Your Emergency Kit

## ESSENTIAL SUPPLIES FOR A MINIMUM OF TWO WEEKS

### Water

1 gallon per person per day — minimum 2 weeks

---

### Food

Nonperishable items, peanut butter, protein shakes, dried fruits, nuts; non-electric can opener

---

### Cash

Small bills: \$1, \$5, \$10, \$20

---

### Light

Flashlights, headlamps, portable fluorescent lights — NO candles

---

### Batteries

Multiple spares for all devices

---

### Radio

Battery or hand-crank with NOAA weather alert

---

### Medical

First aid kit; backup medications and medical devices

---

### Sanitation

Moist towels, trash bags, hand sanitizer, toilet paper, gloves

---

### Vehicle

Full gas tank; charging cables for phones and electronics

---

### Pet Supplies

2 weeks of food, water, and medications

---

### Miscellaneous

Basic tool kit, duct tape, propane stove, disposable propane cylinders

---

### Apps

HLN app; register at [www.smart911.com](http://www.smart911.com)

---

# High-Rise Living Demands Extra Preparation

## WHY CONDO RESIDENTS MUST PREPARE EARLIER

- **No elevator access** during extended power outages — every supply run means climbing stairs.
- **No running water** if pressure fails — toilets, cooking, and hygiene all affected.
- **No appliances** — microwave, refrigerator, stove all require electricity.
- **Limited generator capacity** — emergency power lasts approximately 8 hours only, and diesel resupply is uncertain island-wide.
- **Stairwell navigation** is essential — know your routes before the storm.

*"Can you see yourself carrying a case of water, other supplies and walking up to your floor? It will be physically exhausting!*

*That's why preparation must happen well in advance."*

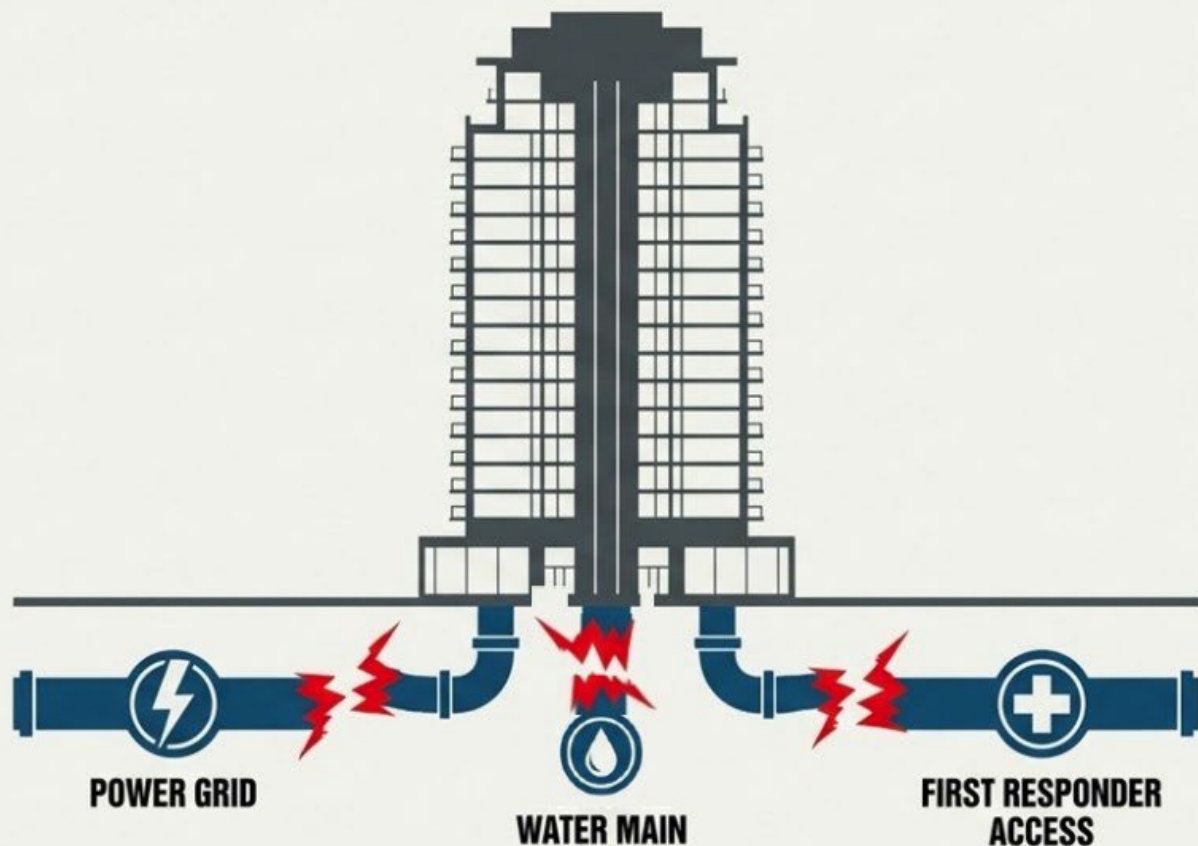


## PRO TIPS FOR HIGH-RISE RESIDENTS

- **Pre-fill bathtubs** with water (do not exceed overflow valve level).
- **Set refrigerator to coldest setting** before a storm; keep it closed to preserve food longer.
- **Store important documents** in one safe, accessible location.
- **Photograph your unit** before and after the storm for insurance purposes.
- **Stock enough supplies** to be fully self-sufficient for at least two weeks.



**When the grid fails, your luxury condo becomes an isolated vertical island.**



**THE REALITY OF VERTICAL ISOLATION:**

**Without electricity, you are in the dark, without appliances, and completely cut off from all elevators.**

**THE CRUCIAL QUESTION:**

**Can you carry a heavy case of water up dozens of flights of stairs in a pitch-black stairwell?**

**THE IMPERATIVE:**

**Preparation must happen well in advance. For days or weeks, you will have to walk up and down fire stairs for all survival needs.**

# Key Contacts & Resources

## OFFICIAL PREPAREDNESS RESOURCES

- **FEMA / Ready.gov:** [www.ready.gov/hurricanes](http://www.ready.gov/hurricanes)
- **Central Pacific Hurricane Center (CPHC):** part of NOAA's national network
- **Keola La'i Emergency Info:** [keolalai.com/resource-category/emergency-preparedness/](http://keolalai.com/resource-category/emergency-preparedness/)
- **HECO / Emergency Preparedness Handbook:**  
<https://www.hawaiianelectric.com/safety-and-outages/storm-center/emergency-preparedness-handbook>

## APPS TO DOWNLOAD NOW

- **HLN App** – local Hawaii news and emergency alerts
- **Smart 911:** Register your household at [www.smart911.com](http://www.smart911.com)

## DURING & AFTER THE STORM

- Management updates will be sent via **text message, email, and other means** when feasible.
- Report unit and common area damage to Management
- Local authorities, hospitals and shelters and will be overwhelmed:  
**self-sufficiency is critical.**

## REMEMBER

- Remain calm and be a good neighbor.
- Debris may block roads – consider alternative transportation.
- The building may not return to normal operations for **days to weeks.**

# PRIMARY RADIO STATIONS PARTICIPATING IN THE EMERGENCY ALERT SYSTEM NETWORK



All local radio stations have voluntarily agreed to participate in the Emergency Alert System. Additional information may also be available on local and cable television. These numbers are primary radio stations with a wide circulation and specialized equipment for use during emergency situations. This list collected by the University of Hawai'i Sea Grant College Program are the radio stations most likely to be in operation during an emergency or disaster. Tune in to a station in your geographic region for up-to-date instructions and information about shelters and resources.

## O'AHU

**KSSK-AM 590 khz**

Office: 808-550-9200

Request: 808-296-5959

**KRTR-FM 96.3 mhz**

Office: 808-275-1000

Request: 808-296-9696

## KAUAI

**KQNG-FM 93.5 mhz**

Office: 808-245-9527

Request: 808-246-9399

## MAUI

**KMVI-AM 550 khz**

Office: 808-877-5566

Request: 808-877-1417

**KAOI-AM 1110 khz**



**KAOI-AM 1110 khz**

Request: 808-244-9145

**HAWAI'I (HILO)**

**KWXX-FM 94.7 mhz**

Office: 808-935-5461

Request: 808-296-5999

**KBIG-FM 97.9 mhz**

Office: 808-961-0651

Request: 808-296-5244

**HAWAI'I (KONA)**

**KWXX-FM 101.5 mhz**

Office: 808-935-5461

Request: 808-296-5999

**KBIG-FM 106.1 mhz**

Office: 808-961-0651

Request: 808-296-5244



Some radio stations have been designated to transmit emergency messages in foreign languages.

These include:

**KSSK AM 590** and **FM 92.3;**

**KZOO AM 1210** (Japanese)

**KREA AM 1540** (Korean)

**KNDI AM 1270** (Multi-cultural

language station to include:

Ilocano, Tagalog, Spanish,

Cantonese, Mandarin, Laotian,

Okinawan, Vietnamese,

Samoan, Tongan, Marshallese,

Chuukese, Pohnpeian and

English).



# Preparedness is Key !

Hurricanes are among nature's most destructive forces. **Act early and collect essential supplies.**

1

## PREPARE EARLY

Before a Watch is posted, stores will be emptied and supplies scarce.

2

## KNOW YOUR BUILDING

Understand Stairwell B route, garage access, trash management and generator limitations.

3

## BE SELF-SUFFICIENT

Plan for at least two weeks without electricity, water, or outside assistance.

*"Hawaii has been, and will be in the future, hit by hurricanes." – Dr. Richard Knabb, NOAA*

**THE CENTRAL PACIFIC HURRICANE SEASON: JUNE 1 – NOVEMBER 30**

**START YOUR KIT TODAY. YOUR SAFETY & WELL-BEING DEPENDS ON IT.**